

# JOURNAL OF PHYSICS: CONFERENCE SERIES

**IOP** Publishing

Volume 1470

2020

[◀ Previous issue](#)   [Next issue ▶](#)

The 7th South East Asia Design Research International Conference (SEADRIC 2019) 25-27 July 2019, Yogyakarta, Indonesia

Accepted papers received: 29 January 2020

Published online: 20 March 2020

## Papers

OPEN ACCESS

012001

[Link between modern building and Kediri's tradition: An idea to develop teaching-learning equipment](#)

F R Fiantika, C Sa'dijah, A Qohar and Darsono

[+ Open abstract](#)

[View article](#)

[PDF](#)

OPEN ACCESS

012002

[Promoting global citizenship using statistics: The role of synchronous communication technology](#)

Russasmita Sri Padi, Aujit Pattanajak and Yosep Dwi Kristanto

[+ Open abstract](#)

[View article](#)

[PDF](#)

OPEN ACCESS

012003

[Using the ELVIS II+ platform to create "learning is fun" atmosphere with the ISLE-based STEM approach](#)

I Irwandi, Rini Oktavia, Rajibussalim and A Halim

[+ Open abstract](#)

[View article](#)

[PDF](#)

OPEN ACCESS

012004

[Incorporating the use of comics in the secondary mathematics teaching of the order of operations](#)

N K H Musa, M Shahrill, I Batrisyia and M S Azamain

[+ Open abstract](#)

[View article](#)

[PDF](#)

OPEN ACCESS

012005

[How using comics can assist in determining the students' learning of distance-time graphs](#)

M S Azamain, M Shahrill, N K H Musa and I Batrisyia

[+ Open abstract](#)

[View article](#)

[PDF](#)

OPEN ACCESS

012006

### Captivating elementary school students' interests in solving mathematics word problems with the use of comics

I Batrisyia, M Shahrill, M S Azamain and N K H Musa

[+ Open abstract](#)

[View article](#)

[PDF](#)

OPEN ACCESS

012007

### Example-engagement-motivation (E2M): Designing an early literacy learning model for elementary school

S Mauliani, B Musthafa and M Agustin

[+ Open abstract](#)

[View article](#)

[PDF](#)

OPEN ACCESS

012008

### Development and validation of a test instrument to measure pre-service mathematics teachers' content knowledge and pedagogical content knowledge

Yosep Dwi Kristanto, Albertus Hariwangsa Panuluh and Elisabeth Dian Atmajati

[+ Open abstract](#)

[View article](#)

[PDF](#)

OPEN ACCESS

012009

### Initial design of blended learning for mathematics subject using the *Kelase* platform by adopting content of *Tri Kaya Parisudha*

I P W Ariawan, D G H Divayana and P W A Suyasa

[+ Open abstract](#)

[View article](#)

[PDF](#)

OPEN ACCESS

012010

### Mathematical critical thinking ability of students grade VII in solving one variable linear equation questions based on their cognitive style

Salwah, N W Ashari and Ma'rufi

[+ Open abstract](#)

[View article](#)

[PDF](#)

OPEN ACCESS

012011

## The development of constructivism-based student worksheets

Noor Fajriah and Yuni Suryaningsih

[+ Open abstract](#)

[View article](#)

[PDF](#)

OPEN ACCESS

012012

## Characteristics of mathematics high order thinking skill problems levels

R O Ariyanto, Mardiyana and Siswanto

[+ Open abstract](#)

[View article](#)

[PDF](#)

OPEN ACCESS

012013

## The design of literacy environment model in primary school

H Hilman, B Musthafa and M Agustin

[+ Open abstract](#)

[View article](#)

[PDF](#)

OPEN ACCESS

012014

## Designing hypothetical learning trajectory in supporting pre-service mathematics teachers to conduct higher-order thinking oriented learning in microteaching course

M S Apriani and V F Rianasari

[+ Open abstract](#)

[View article](#)

[PDF](#)

OPEN ACCESS

012015

## Developing a hypothetical learning trajectory of fraction based on RME for junior high school

Y Yulia, E Musdi, J Afriadi and I Wahyuni

[+ Open abstract](#)

[View article](#)

[PDF](#)

OPEN ACCESS

012016

### Design division mixed fractions materials using PMRI and lesson study

Dinda Mahardika and R I I Putri

[+ Open abstract](#)

[View article](#)

[PDF](#)

OPEN ACCESS

012017

### Preparedness of [K-12] teachers for the implementation of the senior high curriculum in a selected Philippine private school

K M Migallos, R G Cabahug, OSA and A I Hipol

[+ Open abstract](#)

[View article](#)

[PDF](#)

OPEN ACCESS

012018

### Learning pythagorean theorem from ancient China: A preliminary study

A D Fachrudin, R Ekawati, A W Kohar, S Widadah, I B Kusumawati and R Setianingsih

[+ Open abstract](#)

[View article](#)

[PDF](#)

OPEN ACCESS

012019

### Learning trajectory for teaching number patterns using RME approach in junior high schools

A Fauzan and F Diana

[+ Open abstract](#)

[View article](#)

[PDF](#)

OPEN ACCESS

012020

### Learning activities using worksheet characterized by the recognition of mathematical symbols

Zukhrufurrohmah and Octavina Rizky Utami Putri

[+ Open abstract](#)

[View article](#)

[PDF](#)



OPEN ACCESS

012021

### Mathematical modeling learning design using Model-Eliciting Activities (MEAs) approach to two variable linear equation system material

N Pitriana, Darmawijoyo and E Susanti

[+ Open abstract](#)

[View article](#)

[PDF](#)

OPEN ACCESS

012022

### Students' logical mathematical intelligence in completing mathematical problems with natural disaster context

S Fatimah, R Johar and C M Zubainur

[+ Open abstract](#)

[View article](#)

[PDF](#)

OPEN ACCESS

012023

### The implementation of STEM approach in teaching electricity and statistics to a group of ix grade junior high school students in Yogyakarta

Yustina Novi Kurniati, Cicilia Doris Sri Rejeki and Tarsisius Sarkim

[+ Open abstract](#)

[View article](#)

[PDF](#)

OPEN ACCESS

012024

### The prototype of PISA-like digital mathematical tasks

Meryansumayeka, Zulkardi, R I I Putri and C Hiltrimartin

[+ Open abstract](#)

[View article](#)

[PDF](#)

OPEN ACCESS

012025

### Developing teachers' PCK about STEM teaching approach through the implementation of design research

Tarsisius Sarkim

[+ Open abstract](#)

[View article](#)

[PDF](#)

OPEN ACCESS

012026

Analysis of problem solving ability of eight grade students of Santo Aloysius Sleman junior high school in mathematical learning using problem based learning approach to inner tangent between the two circles material

J P Maran and A S J Renggi

[+ Open abstract](#)

[View article](#)

[PDF](#)

OPEN ACCESS

012027

Developing learning trajectories with the RME of phytagorean theorem

M M Towe and H Julie

[+ Open abstract](#)

[View article](#)

[PDF](#)

OPEN ACCESS

012028

The effect of integrated science learning based on local wisdom to increase the students competency

Usmeidi and Risda Amini

[+ Open abstract](#)

[View article](#)

[PDF](#)

OPEN ACCESS

012029

Learning the relation between quadrilateral using geometry's puzzle for blind students

Andriyani and D Juniati

[+ Open abstract](#)

[View article](#)

[PDF](#)

OPEN ACCESS

012030

Local wisdom value's-based literacy education learning model in elementary school

D Lyesmaya, B Musthafa and D Sunendar

[+ Open abstract](#)

[View article](#)

[PDF](#)

OPEN ACCESS

012031

### Students' ability to simplify the concept of function through realistic mathematics learning with the ethnomathematics approach

Dewi Herawaty, Wahyu Widada, Alif Adhitya, Rosalia D W Sari, Liza Novianita and Abdurrobbil Falaq Dwi Anggoro

[+ Open abstract](#)

[View article](#)

[PDF](#)

OPEN ACCESS

012032

### Analysis of grade VII students' learning outcomes for animals classification and sets by using the STEM approach

S Utami, M Roostika, I N Setiawan, H Julie and A H Panuluh

[+ Open abstract](#)

[View article](#)

[PDF](#)

OPEN ACCESS

012033

### Analyzing mathematical creative thinking ability on sample space materials grade VIII SMP Kanisius Pakem

Margaretha Nobilio Pasia Janu and Anung Wicaksono

[+ Open abstract](#)

[View article](#)

[PDF](#)

OPEN ACCESS

012034

### The ability of the civil engineering students to represent partial derivative symbols as metonymy and metaphor

Octavina Rizky Utami Putri and Zukhrufurrohmah

[+ Open abstract](#)

[View article](#)

[PDF](#)

OPEN ACCESS

012035

### Development of data presentation instructional material based on local wisdom for preservice teachers

M Lutfianto, A Syarifuddin, Suhartono and M Atok

[+ Open abstract](#)

[View article](#)

[PDF](#)



OPEN ACCESS

012036

### The development of the pictorial stories about solar panels for elementary schools

K Limiansih and U A Fauziana

[+ Open abstract](#)

[View article](#)

[PDF](#)

OPEN ACCESS

012037

### Analysis of problem-solving skills in material probability in Kanisius Pakem vocational high school

F I Gunawan and N M Lagut

[+ Open abstract](#)

[View article](#)

[PDF](#)

OPEN ACCESS

012038

### Creating category Higher Order Thinking Skills (HOTS) exercise for high school students

Baidil and Somakim

[+ Open abstract](#)

[View article](#)

[PDF](#)

OPEN ACCESS

012039

### Students' thinking process in solving mathematical literacy problem with space and shape content

Lestariningsih, E Nurhayati and M Lutfianto

[+ Open abstract](#)

[View article](#)

[PDF](#)

OPEN ACCESS

012040

### The ability of multi-representation of junior high school students in solving algebra problem in the TIMSS model

I I J Azis, Y Fuad and R Ekawati

[+ Open abstract](#)

[View article](#)

[PDF](#)

## The implementation of STEM approach through project based learning to develop student's creativity

B Budi Setiawan, Maria Rina Kurniasari and Tarsisius Sarkim

[+ Open abstract](#)

[View article](#)

[PDF](#)

---

### OPEN ACCESS

012042

## Utilizing LoRa for IoT based mini weather station as STEM learning media to support industrial revolution 4.0

Irwansyah Putra, R Rajibussalim, I Irwandi and Syukri Muhammad

[+ Open abstract](#)

[View article](#)

[PDF](#)

---

### OPEN ACCESS

012043

## Android application development of exploration career based on Multiple Intellegence: A model hypothetical

C P Bhakti and F A Rahman

[+ Open abstract](#)

[View article](#)

[PDF](#)

---

### OPEN ACCESS

012044

## Application of "what-if" learning strategy to improve students' mathematical critical thinking skills in statistical method I subject

I P A A Payadnya and I M D Atmaja

[+ Open abstract](#)

[View article](#)

[PDF](#)

---

### OPEN ACCESS

012045

## Contribution of teacher's teaching skills and students' intrapersonal intelligence toward metacognitive awareness of students in state vocational school in Blitar

T Maryati, S U Khasanah and V Y Mafula

[+ Open abstract](#)

[View article](#)

[PDF](#)

OPEN ACCESS

012046

### Design research on calculus: Students' journey in learning definition of definite integral

F Tasman, Suherman and D Ahmad

[+ Open abstract](#)

[View article](#)

[PDF](#)

OPEN ACCESS

012047

### Design textbooks based linguistic intelligence towards representation ability on statistics

Setiyani and Y Gloriani

[+ Open abstract](#)

[View article](#)

[PDF](#)

OPEN ACCESS

012048

### Development of evaluation of mathematical communication capabilities based on information technology for junior high school students

I Wahyuni, N Aminah, Y L Sukestiyarno and A Wijayanto

[+ Open abstract](#)

[View article](#)

[PDF](#)

OPEN ACCESS

012049

### Development of student worksheet of mathematical modeling learning using a financial context for senior high school students

Fahmasari and Darmawijoyo

[+ Open abstract](#)

[View article](#)

[PDF](#)

OPEN ACCESS

012050

### Development of the complexity measurement instruments of the mathematical contextual problem of trigonometry topic

M M Melissa and V Y Komalasari

[+ Open abstract](#)

[View article](#)

[PDF](#)

OPEN ACCESS

012051

### Ethnomathematics: Design mathematics learning at secondary schools by using the traditional game of Melayu Riau

Y Roza, S N Siregar and T Solfitri

[+ Open abstract](#)

[View article](#)

[PDF](#)

OPEN ACCESS

012052

### Impact of blended learning instruction in academic performance of grade 10 students in a selected private high school in San Juan City, Philippines

A I Hipol, R Cabahug and R Bongon

[+ Open abstract](#)

[View article](#)

[PDF](#)

OPEN ACCESS

012053

### Implementation of virtual manipulative using problem-based learning on topic algebra for seventh grade student

F A Nay and M A Rudhito

[+ Open abstract](#)

[View article](#)

[PDF](#)

OPEN ACCESS

012054

### The 21<sup>st</sup> century skills of prospective teacher students in the industrial revolution 4.0 era (the adaptation and problem-solving skill)

M Fahmi Johan Syah, Harsono, H J Prayitno and D Susanti Fajriyah

[+ Open abstract](#)

[View article](#)

[PDF](#)

OPEN ACCESS

012055

### Identification of misconceptions on heat and temperature among physics education students using *four-tier diagnostic test*

Kharisma Fenditasari, Jumadi, E Istiyono and Hendra

[+ Open abstract](#)

[View article](#)

[PDF](#)

OPEN ACCESS

012056

### The efforts to develop the geometry teaching and learning tools based on acehnese culture through problem based learning in junior high school students

Husnawati, Anwar and M Ikhsan

[+ Open abstract](#)

[View article](#)

[PDF](#)

OPEN ACCESS

012057

### Development of open online ethnomathematics course

Marcellinus Andy Rudhito, Yosep Dwi Kristanto and Margaretha Madha Melissa

[+ Open abstract](#)

[View article](#)

[PDF](#)

OPEN ACCESS

012058

### Analysing the problem-solving ability through the Problem-Based Learning model on the subject statistics in the grade VIIIB of Kanisius junior high school Kalasan

Y K Pandu and C P Prabaningrum

[+ Open abstract](#)

[View article](#)

[PDF](#)

OPEN ACCESS

012059

### Analysis of spatial ability of class VIII students Institute Indonesia Yogyakarta Problem Based Learning on topic of cuboids and cubes

M Y Nanga and R U Hurit

[+ Open abstract](#)

[View article](#)

[PDF](#)

OPEN ACCESS

012060

### Development of learning using Indonesian realistic mathematics education approach to build students' relational understanding of derivative

S Sulasmi, P D Sampoerno and A Noornia

[+ Open abstract](#)

[View article](#)

[PDF](#)



## Conference Organizers and Committees

### Steering Committee

M.L.A.M. Dolk, *Utrecht University, Netherlands*  
Zulkardi, *Universitas Sriwijaya, Palembang, Indonesia*  
Ratu Ilma Indra Putri, *Universitas Sriwijaya, Palembang, Indonesia*  
Sutarto Hadi, *Universitas Lambung Mangkurat, Banjarmasin, Indonesia*  
Marsigit, *Universitas Negeri Yogyakarta, Indonesia*  
Ahmad Fauzan, *Universitas Negeri Padang, Indonesia*  
Yohanes Harsoyo, *Universitas Sanata Dharma, Yogyakarta, Indonesia*  
Hongki Julie, *Universitas Sanata Dharma, Yogyakarta, Indonesia*  
Paulus Kuswandono, *Universitas Sanata Dharma, Yogyakarta, Indonesia*  
Sudi Mungkasi, *Universitas Sanata Dharma, Yogyakarta, Indonesia*  
Sugiman, *Universitas Negeri Yogyakarta, Indonesia*  
Ariyadi Wijaya, *Universitas Negeri Yogyakarta, Indonesia*  
Rahmah Johar, *Universitas Syiah Kuala, Banda Aceh, Indonesia*  
Suparman, *Universitas Ahmad Dahlan, Yogyakarta, Indonesia*  
Rully C. I. Prahmana, *Universitas Ahmad Dahlan, Yogyakarta, Indonesia*  
Wahid Yunianto, *SEAMEO QITEP in Mathematics, Yogyakarta, Indonesia*

### Conference Chair

Yosep Dwi Kristanto, *Universitas Sanata Dharma, Yogyakarta, Indonesia*

### Conference Vice-Chair

Albertus Hariwangsa Panuluh, *Universitas Sanata Dharma, Yogyakarta, Indonesia*

### Secretary

Margaretha Madha Melissa, *Universitas Sanata Dharma, Yogyakarta, Indonesia*  
Risnita Vicky Listyarini, *Universitas Sanata Dharma, Yogyakarta, Indonesia*

### Treasurer

Cyrenia Novella Krisnamurti, *Universitas Sanata Dharma, Yogyakarta, Indonesia*  
Retno Herrani Setyati, *Universitas Sanata Dharma, Yogyakarta, Indonesia*

### Members

Mega Wulandari, *Universitas Sanata Dharma, Yogyakarta, Indonesia*  
Maria Vincentia Eka Mulatsih, *Universitas Sanata Dharma, Yogyakarta, Indonesia*  
Patricia Angelina, *Universitas Sanata Dharma, Yogyakarta, Indonesia*  
Beni Utomo, *Universitas Sanata Dharma, Yogyakarta, Indonesia*  
Danang Satria Nugraha, *Universitas Sanata Dharma, Yogyakarta, Indonesia*  
FX. Made Setianto, *Universitas Sanata Dharma, Yogyakarta, Indonesia*  
Nicolas Bayu Kristiawan, *Universitas Sanata Dharma, Yogyakarta, Indonesia*  
Bernardinus Agus Arswimba, *Universitas Sanata Dharma, Yogyakarta, Indonesia*  
Yoanni Maria Lauda Feroniasanti, *Universitas Sanata Dharma, Yogyakarta, Indonesia*  
Prias Hayu Purbaning Tyas, *Universitas Sanata Dharma, Yogyakarta, Indonesia*  
Hendra Michael Aquan, *Universitas Sanata Dharma, Yogyakarta, Indonesia*

**Student Volunteers**

Agatha Puri Christidamayani  
Agustinus L. Anggit Danang Eka Saputra  
Alfonsa Vina Kanasya  
Anselmo Stevin Laksito  
Aurelia Anisya Dina Pratiwi  
Aurelly Vita Clarissa  
Avendra Vido Aditya  
Chandra Yuniarto  
Debrito Laksono Putro Mehan  
Elisabeth Novita Puspa Devi  
Faiza Ori Hutami Purnomo  
Faleria Aquina Seran  
Filiph Neri Tatag K. N.  
Fitri Kusumawati  
Francisca Novita Setya Wardhani  
Geovani Debby Setyani  
Giovanni Bayu Adji  
Indri Wulandari  
Lintang Arganinggar  
Lintang Cahyo

Lucia Desy Wijayati  
Lusiana Novia Caturwati  
Margareta Dinda Ayuningtyas  
Monica Rena Kurniawati  
Natanail Aditia  
Noviantika Saraswati  
Pascalis Pandu Sanjaya  
Patrisia Deta AdityaSari  
Rio Dwi Andana  
Royce Nafelino Swanoto  
Tri Raharjo  
Tutur Nur Utami  
Vicensius Adhi Ristanto  
Vinsensius Yudha Wijaya Prakosa  
Yakobus Pankrisius  
Yodan Prahardian Riyandika  
Yohana Dian Rahayu Ningsih  
Yohanes Giovanni Krisna Widiprasetya  
Yulius Bagaswara

## Reviewers

Aan Hendroanto  
Ahmad Fauzan  
Ahmad Wachidul Kohar  
Albertus Hariwangsa Panuluh  
Anwar  
Barli Bram  
Beni Utomo  
Bernardinus Agus Arswimba  
Bungkus Dias Prasetyo  
Cyrenia Novella Krisnamurti  
Danang Satria Nugraha  
Hongki Julie  
Johnsen Harta  
Kadek Adi Wibawa  
Luisa Diana Handoyo  
Marcellinus Andy Rudhito  
Margaretha Madha Melissa  
Maria Suci Apriani  
Mega Wulandari  
Naufal Ishartono  
Nicolas Bayu Kristiawan

Pasttita Ayu Laksmiwati  
Patricia Angelina  
Priyatno Ardi  
Rahmah Johar  
Ratu Ilma Indra Putri  
Risnita Vicky Listyarini  
Rully C. I. Prahmana  
Russasmita Sri Padmi  
Sudi Mungkasi  
Tarsisius Sarkim  
Tatag Yuli Eko Siswono  
Uki Rahmawati  
Usmeldi  
Veronika Fitri Rianasari  
Wahid Yunianto  
Wahyu Widada  
Wisnuningtyas Wirani  
Yenita Roza  
Yosep Dwi Kristanto  
Zulkardi

PAPER • OPEN ACCESS

## Development of the complexity measurement instruments of the mathematical contextual problem of trigonometry topic

To cite this article: M M Melissa and V Y Komalasari 2020 *J. Phys.: Conf. Ser.* **1470** 012050

View the [article online](#) for updates and enhancements.

You may also like

- [Analysis of instruments and mathematical disposition using Rasch model](#)  
D Suhaedi, M Y Fajar, I Sukarsih et al.
- [A simple distance measurement instrument based on the law of light reflection](#)  
Himawan Putranta, Abdul Aziz Nur Rohman, Ernasari et al.
- [Content validity determination of the countenance-tri kaya parisudha model evaluation instruments using lawshe's CVR formula](#)  
D G H Divayana, P W A Suyasa and A Adiarta



The Electrochemical Society  
Advancing solid state & electrochemical science & technology

242nd ECS Meeting

Oct 9 – 13, 2022 • Atlanta, GA, US

**Extended abstract submission deadline: April 22, 2022**

Connect. Engage. Champion. Empower. Accelerate.

**MOVE SCIENCE FORWARD**



Submit your abstract



# Development of the complexity measurement instruments of the mathematical contextual problem of trigonometry topic

M M Melissa<sup>1\*</sup> and V Y Komalasari<sup>2</sup>

<sup>1</sup>Mathematics Education Department, Sanata Dharma University, Yogyakarta, Indonesia

<sup>2</sup>Mathematics teacher of SMP ASISI Jakarta, Indonesia

E-mail: \*madha.melissa@usd.ac.id

**Abstract.** The complexity of mathematical contextual problems was used to estimate the time to solve the problem and know whether students achieve the competence or not. This aim of this study was to produce the instrument for measuring the complexity of mathematical contextual problem of trigonometry topic. This research and development model used the combination of Plomp and Cennamo & Kalk. The phase were: (1) preliminary study, (2) development, and (3) presentation. The subjects of this study were 1 mathematics teacher, 4 prospective mathematics teachers, and 2 mathematics lecturers. Data collection techniques used questionnaire, test, and interview. Questionnaire validation was used to determine the validation of the developed instrument. The complexity measurement instrument filled by the test subjects to determine the reliability of the developed instrument. Trigonometric test was used to classify students into groups according to their level of ability. Interview was used to determine the practicality of the instruments developed. The results of the study showed that the complexity measurement instrument of mathematical contextual problem that being developed had good quality, it was valid, practice, and reliable. The instrument has been declared valid by the expert and eligible to be tested with minor revisions. This instrument also reached practical criteria based on the results of interviews with respondents. This instrument had fulfilled the reliable criteria based on the calculation of the reliability coefficient which was obtained that each component had fulfilled a minimum “sufficient category” of reliability. There were 4 high reliability components and 2 sufficient reliability components.

## 1. Introduction

The purpose of learning mathematics could be achieved if learning takes place effectively. National Council Teacher of Mathematics (NCTM) stated that effective mathematics learning will be able to foster understanding of what learners learn [1]. One of the factors to know the effectiveness of the mathematics learning process in schools comprehensively, teachers must be able to do and took advantage of evaluations, assessments, and learning outcomes of students. In addition, Minister of National Education Regulation Number 16 of 2007 concerning Academic Qualifications and Competency Standards Subject teachers (including senior high school) stated that subject teacher competencies include developing assessment instruments [2].

Assessments can provide constructive feedback for teachers and students. The results of the assessment can also motivate students to perform better. Therefore, to achieve this goal, mathematics learning in schools must be meaningful and useful for students in their daily lives. One way for learning to be meaningful and useful for students is to provide mathematical contextual questions. According to Lailatul Istiqomah [3] contextual is linking between learning material with the real world





situation of students, and encouraging students to make a connection between the knowledge they have and their application in their daily lives.

Based on the results of an interview with one of the mathematics teachers at Pangudi Luhur Santo Yusup Senior High School in Yogyakarta, it was found that the teacher conducted an evaluation of mathematics learning by giving questions, assignments, Daily Deuteronomy, Mid Semester Deuteronomy, Semester Deuteronomy, and School Deuteronomy. The type of question the teacher always uses is a matter of description. Teachers usually give 10 items for easy problem categories or 5 items for moderate problem categories or 2 items for difficult questions. The way the teacher classifies the questions given includes difficult, moderate, or easy questions that are based on teaching experience in the classroom. This is done because there is no instrument to measure the difficulty level of the question. Teachers rarely provide contextual questions because many students find it difficult to turn a sentence into a mathematical sentence. Mathematical contextual questions are mathematical questions that use various contexts so as to present situations that have been experienced in real terms for students. In the question, the context must be in accordance with the mathematical concepts being studied.

One of the difficult material in high school according to the teacher is trigonometry. Trigonometry is one branch of mathematics that studies the relationship of angles and sides in a triangle. Trigonometry material used in research is the material learned by 10th grade students about comparisons, functions, equations, and trigonometric identities. Because material trigonometry is difficult for students, it would be better if in learning the teacher provides contextual and real questions in life so that it is easier for students to imagine.

One reason for the lack of effectiveness of contextual learning usually occurs because of giving mathematical questions that are not in accordance with the competencies or material being studied. The scope of the questions that are too broad make it difficult for students to solve the problem. This has an impact on the time allocation given. In other words, the math problem given is too complex. Complex can be defined as some complicated, complicated and difficult elements. According to William and Clarke [4] in Towards Construct Measuring the Complexity of Application Tasks propose to pay attention to six important components that are believed to be able to measure the complexity of a mathematical contextual problem namely: 1) Conceptual Complexity, 2) Complexity of Mathematics, 3) Complexity of Linguistics, 4) Intellectual Complexity, 5) Representational Complexity, and 6) Contextual Complexity.

According to Colton and Covert [5] and Purwanto [6] instruments are tools used to measure phenomena, record information intended for assessment and make decisions. The complexity of a contextual question needs to be measured so that it can be more precise in its use, such as the time needed to work on the problem and the achievement of competence. The instrument is said to be of high quality if it meets the criteria: validity, practicality, and reliability [7].

## **2. Research Methodology**

This research is a development research. The development research model used in this study is combining the development model proposed by Plomp [8], and Cennamo & Kalk [9], with adjustments and simplifications. The development procedure includes the following activities: 1) preliminary investigation, 2) define and design, 3) construction, 4) test and revision, 5) delivery.

After the problem complexity assessment instrument was developed, field trials were carried out. Instrument testing activities in the field (field testing) are carried out in two stages, namely: expert judgment and limited trials. The aim is to be carried out by expert judgment to determine the quality of the product developed from the aspect of validity. Expert review is done by validating the draft instrument for measuring the complexity of contextual questions that have been developed by mathematicians using a validation sheet. The aim of this trial is to apply the instrument for measuring the complexity of the mathematical contextual problems developed. This trial is intended to test the practicality and reliability of the instrument.

The subjects of the trial group were limited to this study, namely 1 mathematics teacher of class X Pangudi Luhur Santo Yusup High School Yogyakarta, 8th semester mathematics teacher candidates at Sanata Dharma University, and 2 mathematics lecturers in the Mathematics Education study program at Sanata Dharma University. Data collection techniques use questionnaires, written tests and interviews. The instruments of data collection are questionnaire validation sheets and questionnaires measuring the complexity of contextual issues, contextual math problems, and interview guidelines. The validity analysis technique that is the product developed is said to fulfill the validity aspect if each component in the instrument developed is said to be valid and the minimum validator states that the product developed is worthy of being tested in the field with revisions. For practicality analysis, the product developed is said to be practical if the results of the interview show that the questionnaire is practically used. Reliability analysis is calculated using SPSS and the product developed is said to be reliable if at least it meets sufficient reliability categories. The reliability category were in the table.

**Table 1.** The reliability category

Coefficient of reliability	Category
$0,80 < r_{xy} \leq 1,00$	Very high category
$0,60 < r_{xy} \leq 0,80$	High category
$0,40 < r_{xy} \leq 0,60$	Medium category
$0,20 < r_{xy} \leq 0,40$	Low category
$r_{xy} \leq 0,20$	Very low category

The complexity criteria as follow.

**Table 2.** The complexity criteria

Interval score	Category
$43,45 < \bar{x} \leq 53$	Very high complexity
$37,15 < \bar{x} \leq 43,45$	High complexity
$30,85 < \bar{x} \leq 37,15$	Medium complexity
$24,55 < \bar{x} \leq 30,85$	Low complexity
$15 < \bar{x} \leq 24,55$	Very low complexity

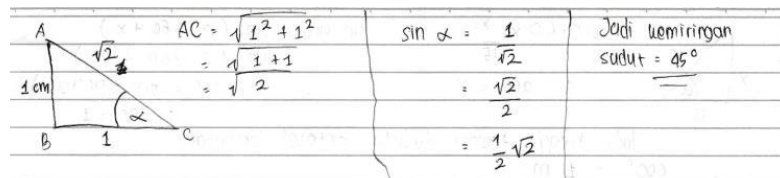
### 3. Result and Discussion

In this section, we would discuss about the complexity measurement instrument, how it used to predict students' answer, validity, practicality, and reliability of the instrument. The aspect of complexity measurement instrument are as follows:

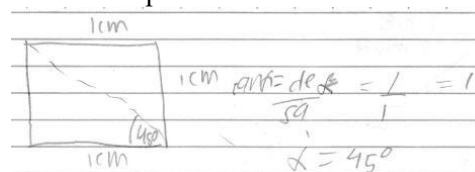
- 1) Contextual complexity: (a) The number of topic of the question, and (b) development of the mindsets.
- 2) Complexity of mathematics: (a) The number of steps to solve the problem, (b) The length of the solution, (c) The type of the problem.
- 3) Complexity of linguistic: (a) The kind of language that used, (b) The language of the problem, (c) Sentence of the problem.
- 4) Intellectual complexity: (a) Solution need analysis and (b) The level of problem challenge.
- 5) Representational complexity: (a) Solution can be represent by diagram, graphic, or picture and (b) The complexity to draw diagram, graphic, or picture.
- 6) Contextual complexity: (a) Type of the problem, (c) Contextual level of the problem, (c) The reality of the problem.

From the results of the measurement of the complexity of contextual questions for question number 1 which has been filled in by teachers, prospective teachers, and mathematics lecturers based on

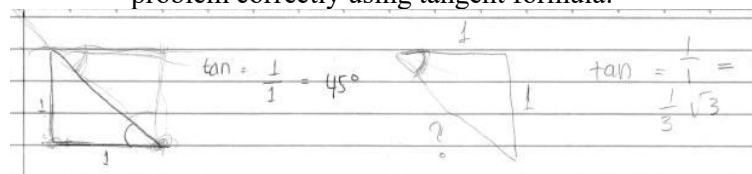
existing instruments, researchers perform calculations and based on existing criteria obtained that number one has a **moderate complexity** because it has an average of 30. It predicted that students will not have so much difficulty in solving the problem because the topics related to the problem are low. They also predict that students will be able to represent the image and solve the problem in various ways. The contextual matter measurement instrument that has been filled in by the teacher, the prospective teacher and the mathematics lecturer will be compared with the results of the student's work.



**Figure 1.** The answer of student 1 for question number 1. Student draw the sketch, but not appropriate with the problem. Student solve the problem use sine formula. The answer was correct.



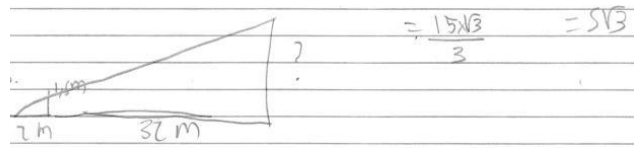
**Figure 2.** The answer of student 2 for question number 1. Student draw the sketch and answer the problem correctly using tangent formula.



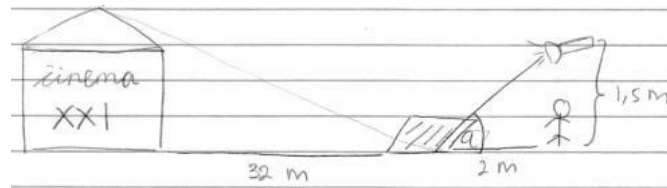
**Figure 3.** The answer of student 3 for question number 1. Student draw the sketch and answer the problem correctly using tangent formula.

From the three results of student work, it can be seen that it is true that the three students can represent solutions in the form of drawings or sketches, even though the images they make are not in accordance with what is known from the problem. This is possible because of the lack of analytical skills of students in working on question number 1. But they answered correctly for mathematical calculations. From the results of student work it can also be seen that students various ways of answering questions. Student 1 answers the question using the Pythagorean formula, then uses the sine rule to solve it. Students 2 and 3 can directly answer questions using tangent rules. This is in accordance with the predictions of teachers, prospective teachers and mathematics lecturers that students will use various steps/ways to solve this problem. This shows that the complexity of the problem is moderate.

From the results of calculations and based on the existing criteria it is found that the question number 2 has a **high level of complexity** because it has an average of 39,257. Teachers, prospective teachers, and mathematics lecturers predict that high school students in class X given the problem will experience difficulties. They predict that students will solve the problem in various ways and use a long enough step. In addition, analysis is needed in solving these questions, this is seen from the level of challenge of the questions that are quite high and the types of questions given are about mathematical applications because it requires a lot of information processing in modelling mathematical forms. Student 1 didn't answer the question.



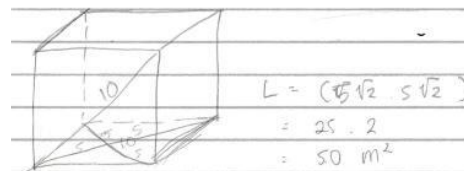
**Figure 4.** The answer of student 2 for question number 2. Student tried to draw a sketch, but it didn't mean anything. The answer was incorrect.



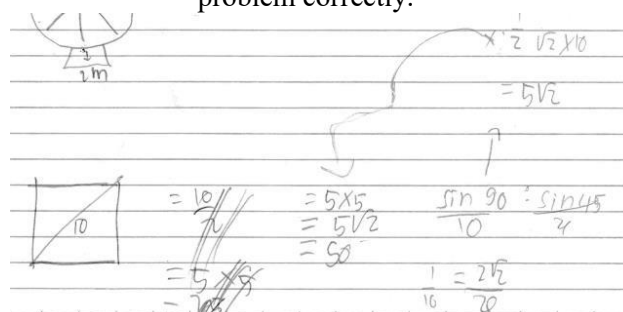
**Figure 5.** The answer of student 3 for question number 2. Student made the correct sketch, but didn't solve the problem.

From the results of the answers the students found it very difficult to work on question number 2. This can be seen from many students who did not work on the problem. Student 1 doesn't work at all. Student 2 tries to answer by making a sketch, but the picture they made does not mean anything at all. They only make triangles and lines, along with a little information. Student 3 is correct in sketching, but does not do mathematical calculations. This shows the complexity of the problem number 3 including in high complexity.

From the results of measurement number 3, it was found that the average was 25.71 so that it was included in the category of **low complexity**. Teachers, prospective teachers, and mathematics lecturers predict if high school students in class X are given the problem students will not have difficulty in doing the work.



**Figure 6.** The answer of student 1 for question number 3. Student draw the sketch and answer the problem correctly.



**Figure 7.** The answer of student 2 for question number 3. The student answer the question correctly, but the sketch was not clear.

**Figure 8.** The answer of student 3 for question number 3. Student draw the sketch and answer the problem correctly.

From the student's answers, it can be seen that most students answer question number 3 correctly. All students begin the settlement by sketching first, then doing mathematical calculations. The method used by each student is different, this affects the number of steps students take. After sketching, student 1 immediately calculates, so that only one step is needed. Students 2 and 3 solve this problem by looking for the build side first, then find a solution, so they need 2-3 steps of work. Based on this, the level of complexity of question number 3 falls into the category of low complexity.

The results of the validation show that the instrument for measuring the complexity of contextual mathematical problems needs to be improved. After repairs are made, each item of the instrument is declared valid by the validator and the product developed is ready to be tested in the field.

The practicality test is obtained based on the results of interviews of researchers with the subject of the trial. There were four respondents who the researchers took from the four prospective mathematics teachers. They said that the instrument for measuring the complexity of the mathematical contextual problems developed was quite good. It can be concluded that this instrument is quite easy to use, so that this instrument meets the practical category. Based on the results of the interview, it was concluded that the measurement instrument for contestants' complexity is easy to use because it does not require a lot of equipment, easy to check, equipped with clear instructions so that it is easy to use by others, making instruments is also economical, does not require a lot of energy, and time which is used to fill this instrument is relatively short. Therefore, the instrument that has been developed can be said to be practical in its use.

Tests for reliability obtained from the results of the Cronbach's Alpha calculation obtained results:

- 1) Reliability of conceptual complexity is 0,75 in a high category
- 2) Reliability of complexity of mathematics is 0,62 in a high category
- 3) Reliability of complexity of linguistic is 0,68 in a high category
- 4) Reliability of intellectual complexity is 0,72 in a high category
- 5) Reliability of representational complexity is 0,5 in a medium category
- 6) Reliability of contextual complexity is 0,57 in a medium category

It can be seen that each component meets the reliability criteria, that is, at least the reliability criteria are sufficient. So it can be concluded that the instrument for measuring the complexity of mathematical contextual questions that have been developed meets criteria that are reliable and feasible to use.

Based on the description of the study above, it can be concluded that the product of the mathematics contextual problem measurement instrument has proven its validity, practicality and reliability. Thus, the product of the complexity contextual mathematical problem measurement instrument is feasible.

#### 4. Conclusion

The results of the study showed that the complexity measurement instrument of mathematical contextual problem that being developed had good quality, it is fulfilling valid, practical, and reliable criteria. The instrument has been declared valid by the expert and eligible to be tested with minor revisions. This instrument also reaches practical criteria based on the results of interviews with respondents. This instrument has fulfilled the reliable criteria based on the calculation of the reliability coefficient which is obtained that each component has fulfilled a minimum "sufficient category" of



reliability. There are 4 components that have high reliability and 2 components have sufficient reliability.

### References

- [1] NCTM 2000 Principles and Standards for School Mathematics (Reston, VA: NCTM)
- [2] Permendiknas 2007 Nomor 16 Tahun 2007 tentang Standar Kualifikasi Akademis dan Kompetensi Guru
- [3] Istiqomah L 2009 *Pendekatan Kontekstual* (Bogor: Ghalia Indonesia)
- [4] Stillman G and Galbarith P 2003 Towards Constructing a Measure of the Complexity of Application Task *Mathematical Modelling: A Way of Life ITCMA 11* (Woodhead Publishing) pp 179-88
- [5] Colton D and Convent R W 2007 *Designing And Constructing Instruments for Social Research and Evaluation* (San Fransisco, CA: John Wiley and Sons)
- [6] Purwanto 2012 *Instrumen Penelitian Sosial dan Pendidikan. Pengembangan dan Pemanfaatan.* (Yogyakarta: Pustaka Belajar)
- [7] Miller M D, Linn R L and Gronlund N E 2009 *Measurement and Assessment in Teaching* (Upper Saddle River: Pearson Educational)
- [8] Plomp T 2013. Educational design research: an introduction *Educational Design Research* (Enschede, OV: SLO.J) pp 10-51
- [9] Cennamo K and Kalk D 2005 *Real World Instructional Design* (Canada: Thomson Learning)