

# Brotowali (*Tinospora crispa* L.) stem extract activity as an $\alpha$ - Amylase enzyme inhibitor

*by* Yustina Sri Hartini

---

**Submission date:** 21-Nov-2022 05:21PM (UTC+0700)

**Submission ID:** 1960216192

**File name:** tini-Setyaningsih\_Crismaurin\_Delphia\_published\_22\_Maret\_2022.pdf (312.13K)

**Word count:** 1949

**Character count:** 10699

IAI SPECIAL EDITION

RESEARCH ARTICLE

# Brotowali (*Tinospora crispa* L.) stem extract activity as an $\alpha$ -Amylase enzyme inhibitor

Yustina Sri Hartini, Dewi Setyaningsih, Fetiana Chrismaurin, Fila Delfia  
Faculty of pharmacy, Sanata Dharma University, Yogyakarta, Indonesia

## Keywords

$\alpha$ -amylase enzyme  
Aqueous extract  
Ethanol extract  
*Tinospora crispa* L. stem

## Correspondence

Yustina Sri Hartini  
Faculty of pharmacy  
Sanata Dharma University  
Yogyakarta  
Indonesia  
yustinahartini@usd.ac.id

## Abstract

**Introduction:** Reducing glucose absorption in the gastrointestinal tract is one of the strategies for treating diabetes mellitus. The condition of treating diabetes mellitus can be achieved by inhibiting the activity of the  $\alpha$ -amylase enzyme. Brotowali (*Tinospora crispa* L.)/Tc has antihyperglycemic activity; compounds contained in the Tc stem can inhibit the activity of the  $\alpha$ -amylase enzyme. The extraction of the Tc stem used for treatment was done with water and/or ethanol. **Aim:** This study aimed to measure the inhibitory activity of the  $\alpha$ -amylase enzyme in both aqueous and ethanolic extract Tc stem. **Methods:** The inhibitory activity test of the  $\alpha$ -amylase enzyme was carried out using the UV-visible spectrophotometric method. **Results:** The aqueous extract and ethanolic extract of Tc stem had  $\alpha$ -amylase enzyme inhibitory activity with  $IC_{50}$  values of  $11.660 \pm 0.310$  mg/mL and  $10.348 \pm 0.313$  mg/mL, respectively. The Tc stem extracted with water or ethanol can be used as an antidiabetic drug.

## Introduction

Since ancient times, people have used plants as medicinal ingredients for the treatment of various conditions. Traditionally, diabetes mellitus was among the diseases that can be treated with the stems of brotowali (*Tinospora crispa* L.)/Tc. Managing blood sugar levels is a way to prevent diabetes mellitus. The  $\alpha$ -amylase enzyme plays a role in converting carbohydrates into sugar; the inhibition of  $\alpha$ -amylase enzyme activity can suppress the formation of blood sugar (Hilalzaïd & Slemannkadan, n.d.). Tc stem is famous as a medicinal ingredient characterised by a very bitter taste. Tc contains more than 65 compounds isolated from various groups of compounds, such as furano-diterpenes, lactones, steroids, flavonoids, lignans, and alkaloids (Ahmad *et al.*, 2016). People use medicinal plants by boiling them in water. This statement goes along with the making or the use methods of Tc stems, as stated in the Formulary of Indonesian Traditional Medicines (Keputusan Menteri kesehatan Republik Indonesia, n.d.). Aqueous extracts from several plants exhibited the  $\alpha$ -amylase enzyme

inhibiting activity (Bhutkar & Bhise, 2012). The antidiabetic activity was tested using an *in vitro* method in the form of an  $\alpha$ -amylase enzyme inhibition activity test (Patil *et al.* 2012, Antidiabetic, n.d.). This study aimed to compare the activity of aqueous and ethanolic extracts of Tc stems against  $\alpha$ -amylase enzymes *in vitro*.

## Material and method

Brotowali stem (*Tinospora crispa* L.) was received from PT HRL Internasional, East Java. The maceration method was used in the compound extraction of Tc leaf. The identification of Tc leaf methanolic extract compounds was carried out using Thin Layer Chromatography/TLC. The materials used were  $\alpha$ -amylase enzyme (SIGMA Aldrich), Quercetin (E. Merck), ethanol pro analysis (E. Merck), double-distilled water, dimethyl sulfoxide pro analysis (E. Merck), iodine iodide reagent, potato starch, 1N HCL, acarbose tablets (PT Dexa Medica). The  $\alpha$ -amylase enzyme (from porcine pancreas-type VI-B, CAS A3176, SIGMA Aldrich)

inhibitory activity test was carried out according to Ononamadu and colleagues (Ononamadu *et al.*, 2020) with few modifications. The following ingredients were mixed: potato starch (1% w/v), 1 ml of test material (Tc extract, acarbose), 1 ml of the  $\alpha$ -amylase enzyme (1% w/v), and 2 ml of acetate buffer (0.1M, 7.2 pH). The measurement of the inhibitory effect of the sample blank solution was carried out by taking 1 ml of 0.5% potato starch solution into a test tube. The mixture was incubated for one hour, then a 0.1 ml iodine-iodide indicator was added to the mixture. The absorbance measurement used a UV-Vis spectrophotometer using a wavelength of 536 nm. The percentage of inhibition was calculated as follows:

$$\% \text{ inhibition} = (As - Ac / As) \times 100$$

\*Ac is the absorbance of the control; As is the absorbance of the sample.

The inhibitory concentration ( $IC_{50}$ ) calculation was obtained from the linear regression equation after calculating the percentage of inhibition of  $\alpha$ -amylase enzyme activity of the test material with a concentration range of 4 mg/ml, 8 mg/ml, 15 mg/ml, and 20 mg/ml. This research used the analysis of variance (ANOVA) to compare the treatment. A value of  $p < 0.05$  was considered statistically significant, alongside the Tukey Post-Hoc Test significance and a 95% confidence interval. Linear regression measured the median  $IC_{50}$  to determine the inhibitory activities of  $\alpha$ -amylase. This research used IBM SPSS statistics version 22 for statistical analysis.

## Results

The addition of the concentrations of the three test materials (aqueous extract of Tc stem, ethanolic extract of Tc stem, acarbose tablet) increased the percentage of inhibition of  $\alpha$ -amylase enzyme activity (Figure 1). The inhibitory activity of the  $\alpha$ -amylase enzyme from acarbose was higher than that of the aqueous extract and the ethanolic extract of the Tc stem. At concentrations of 4 mg/ml and 8 mg/ml, Tc stem aqueous extract showed higher inhibition of  $\alpha$ -amylase enzyme activity than ethanolic extract, but at a concentration of 20 mg/ml, it occurred otherwise. At the same concentration of 15 mg/ml, Tc stem aqueous extract and Tc stem ethanolic extract showed the same percentage of inhibition of  $\alpha$ -amylase enzyme activity. Statistical tests ( $P < 0.05$ ) showed a significant difference between the percentage of inhibition of  $\alpha$ -amylase enzyme activity of aqueous extract Tc stem, ethanolic extract Tc stem, and acarbose tablets. The TLC of the Tc did not show a spot similar to the quercetin spot (Figure 2).

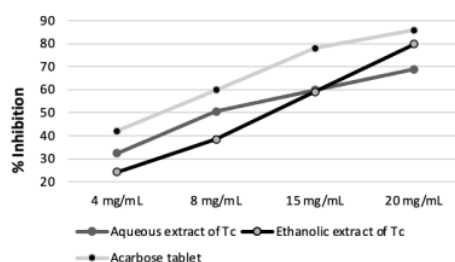
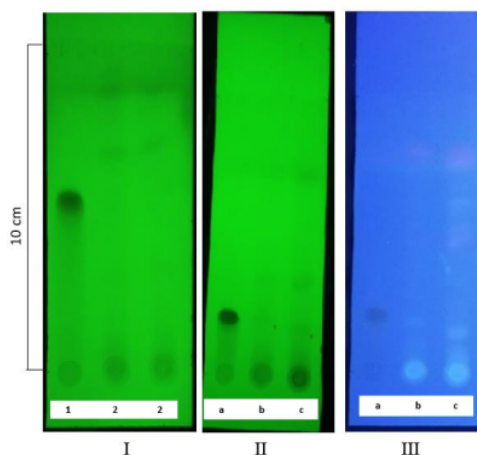


Figure 1: Percent inhibition of aqueous extract, ethanolic extract, and acarbose tablet



Note: (1) Quercetin, (2) Tc stem powder, (a) Quercetin, (b) Aqueous extract of Tc stem, (c) Ethanolic extract of Tc stem, (I-II) UV<sub>254</sub> nm detection, (III) UV<sub>365</sub> nm detection.

Figure 2: Thin Layer Chromatogram

## Discussion

The inhibitory activity of aqueous and ethanolic extracts of bitter leaf on  $\alpha$ -amylase enzyme activity was tested *in vitro*. As shown in Figure 1, the higher concentration of the material tests increased the percentage of inhibition of  $\alpha$ -amylase enzyme activity. The level of inhibitory activity against the  $\alpha$ -amylase enzyme is expressed as 50% inhibition concentration ( $IC_{50}$ ). The  $IC_{50}$  values were  $11.660 \pm 0.310$  mg/ml,  $0.348 \pm 0.313$  mg/mL, and  $5.554 \pm 0.380$  mg/mL for Tc stem aqueous extract, Tc stem ethanolic extract, and acarbose tablets, respectively. The antidiabetic drug acarbose was chosen as a positive control because of its chemical structure, similar to that of starch that acts as a substrate. Both compounds have a benzene ring

and a hydroxyl group that play a role in binding the enzyme's active site. This activity occurred so that a competitive inhibition mechanism of enzyme activity could happen (Takahama & Hirota, 2018). *In vivo* antidiabetic activity of Tc stem has been reported. *Tinospora crispa* L. stems contain alkaloids, flavonoids, glycosides, and terpenoids (Elya et al., 2015). In this study, a reference standard compound used flavonoid quercetin. The presence of quercetin in aqueous extract and ethanol extract of Tc stems could not show with the TLC. Even though there are faint spots in the same Rf region, the presence of the same compound with quercetin cannot be asserted. TLC did not detect the presence of quercetin at the same RF value (Figure 2).

Several studies reported the presence of quercetin in Tc stems. Methods other than TLC are recommended to detect the presence of quercetin in aqueous extracts and ethanolic extracts of Tc stems. Borapetoside C is the compound most commonly found in Tc plants and can inhibit the  $\alpha$ -amylase enzyme (Hamid et al., 2015). Compounds in the aqueous extract and ethanol extract of Tc stems showed  $\alpha$ -amylase enzyme inhibitory activity, which could be due to borapetoside C or several compounds, either singly or in a combination of the compounds in the extract. Several studies have shown that the overall activity of botanical extracts can result from mixtures of compounds with synergistic, additive, or antagonistic activity. Proponents of the medicinal use of natural product mixtures often claim that they are more effective than purified compounds due to beneficial "synergistic" interactions (Caesar & Cech, 2019). The active compound that functions as an inhibitor of the  $\alpha$ -amylase enzyme can be in Tc stems aqueous or the ethanolic extracts, so both can be used as antidiabetic drugs. Further studies need to focus on the compounds or combinations of compounds in both aqueous extracts and ethanolic extracts of Tc stems responsible for the antidiabetic activity through the inhibition of the  $\alpha$ -amylase enzyme.

## Conclusion

In conclusion, *in vitro*, aqueous extract and ethanolic extract of brotowali (*Tinospora crispa* L.) stem showed  $\alpha$ -amylase inhibitory activity with  $IC_{50}$  values of  $11.660 \pm 0.310$  mg/mL and  $10.348 \pm 0.313$  mg/mL, respectively.

## Acknowledgements

The researchers would like to thank PT HRL Internasional and LPPM Sanata Dharma University for

the materials and funds support for this research.

## References

- Ahmad, W., Jantan, I., & Bukhari, S. N. A. (2016). *Tinospora crispa* (L.) Hook. f. & Thomson: A review of its ethnobotanical, phytochemical, and pharmacological aspects. In *Frontiers in Pharmacology* (Vol. 7, Issue MAR). Frontiers Media S.A. <https://doi.org/10.3389/fphar.2016.00059>
- Bhutkar, M. A., & Bhise, S. B. (2012). In vitro assay of alpha amylase inhibitory activity of some indigenous plants. In *Int. J. Chem. Sci* (Vol. 10, Issue 1). [www.sadgurupublications.com](http://www.sadgurupublications.com)
- Caesar, L. K., & Cech, N. B. (2019). Synergy and antagonism in natural product extracts: When 1 + 1 does not equal 2. In *Natural Product Reports* (Vol. 36, Issue 6, pp. 869–888). Royal Society of Chemistry. <https://doi.org/10.1039/c9np00011a>
- Elya, B., Handayani, R., Sauriasari, R., Azizahwati, Hasyati, U. S., Permana, I. T., & Permatasari, Y. I. (2015). Antidiabetic activity and phytochemical screening of extracts from Indonesian plants by inhibition of alpha amylase, alpha glucosidase and dipeptidyl peptidase IV. *Pakistan Journal of Biological Sciences*, 18(6), 273–278. <https://doi.org/10.3923/pjbs.2015.279.284>
- Hamid, H. A., Yusoff, M. M., Liu, M., & Karim, M. R. (2015).  $\alpha$ -Glucosidase and  $\alpha$ -amylase inhibitory constituents of *Tinospora crispa*: Isolation and chemical profile confirmation by ultra-high performance liquid chromatography-quadrupole time-of-flight/mass spectrometry. *Journal of Functional Foods*, 16, 74–80. <https://doi.org/10.1016/j.jff.2015.04.011>
- HilalZaid, B., Zaid, H., Shanak, S., and Kadan, S. (2017). *Anti-diabetes and Anti-obesity Medicinal Plants and Phytochemicals Safety, Efficacy, and Action Mechanisms*. Springer International Publishing. Switzerland
- Ministry of Health Republic of Indonesia, (2017). *Formulary of Indonesian Traditional Medicines*. Ministry of Health Republic of Indonesia, Jakarta
- Ononamadu, C. J., Ezeigwe, O. C., Owolarafe, T. A., Ihegboro, G. O., Lawal, T. A., Salawu, K., Umeoguaju, U. F., & Aminu, I. (2020). Starch-iodine assay method underestimates  $\alpha$ -amylase inhibitory potential of antioxidative compounds and extracts. *Biotechnology*, 101(1), 45–54. <https://doi.org/10.5114/bta.2020.93103>
- Patil A., Nirmal, S., Pattan, S., Tambe, V., and Tare, M. (2012). Antidiabetic Effect of Polyherbal Combination in STZ Induced Diabetes Involve Inhibition of Amylase and Glucosidase with Amelioration of Lipid Profile. *Phytopharmacology*, 2(1):46-57
- Takahama, U., & Hirota, S. (2018). Interactions of flavonoids with  $\alpha$ -amylase and starch slowing down its digestion. In *Food and Function*. 9 (2), pp. 677–687). Royal Society of Chemistry. <https://doi.org/10.1039/c7fo01539a>

# Brotowali (*Tinospora crispa* L.) stem extract activity as an $\alpha$ -Amylase enzyme inhibitor

## ORIGINALITY REPORT

22%

SIMILARITY INDEX

13%

INTERNET SOURCES

18%

PUBLICATIONS

5%

STUDENT PAPERS

## PRIMARY SOURCES

- 1 Ehfazul Haque, Md. Sazzadul Bari, Labony Khandokar, Juhaer Anjum, Ibrahim Jantan, Veronique Seidel, Md. Areeful Haque. "An updated and comprehensive review on the ethnomedicinal uses, phytochemistry, pharmacological activity and toxicological profile of *Tinospora crispa* (L.) Hook. f. & Thomson", *Phytochemistry Reviews*, 2022  
Publication 3%
- 2 Satish C. Sati, Gurpreet Kour, Ankit S. Bartwal, Maneesha D. Sati. " Biosynthesis of Metal Nanoparticles from Leaves of and Evaluation of Their Anti-inflammatory and Anti-diabetic Activities ", *Biochemistry*, 2020  
Publication 2%
- 3 [pubs.rsc.org](https://pubs.rsc.org)  
Internet Source 2%
- 4 Ashish Christopher, Dipayan Sarkar, Steve Zwinger, Kalidas Shetty. "Ethnic food perspective of North Dakota Common Emmer 2%

# Wheat and relevance for health benefits targeting type 2 diabetes", Journal of Ethnic Foods, 2018

Publication

---

5	<a href="http://portal.research.lu.se">portal.research.lu.se</a> Internet Source	1 %
6	<a href="http://123dok.com">123dok.com</a> Internet Source	1 %
7	Camilia George Michel, Demiana Ibrahim Nesseem, Manal Fouad Ismail. "Anti-diabetic activity and stability study of the formulated leaf extract of Zizyphus spina-christi (L.) Willd with the influence of seasonal variation", Journal of Ethnopharmacology, 2011 Publication	1 %
8	<a href="http://impactfactor.org">impactfactor.org</a> Internet Source	1 %
9	<a href="http://dokumen.pub">dokumen.pub</a> Internet Source	1 %
10	<a href="http://erepo.unud.ac.id">erepo.unud.ac.id</a> Internet Source	1 %
11	Submitted to De Montfort University Student Paper	1 %
12	<a href="http://link.springer.com">link.springer.com</a> Internet Source	1 %

---

13	Internet Source	1 %
14	<a href="http://journal.ugm.ac.id">journal.ugm.ac.id</a> Internet Source	1 %
15	Md. Areeful Haque, Ibrahim Jantan, Hemavathy Harikrishnan, Siti Mariam Abdul Wahab. "Magnoflorine Enhances LPS-Activated Pro-Inflammatory Responses via MyD88-Dependent Pathways in U937 Macrophages", <i>Planta Medica</i> , 2018 Publication	1 %
16	Yustina Sri Hartini, Sitarina Widyarini, Laurentius Hartanto Nugroho. "The comparison of two neolignans isolated from red betel leaf and its extract against macrophage phagocytic activity, the level of AST, and histopathological features of the liver in mice", <i>Oriental Pharmacy and Experimental Medicine</i> , 2018 Publication	1 %
17	<a href="http://innovareacademics.in">innovareacademics.in</a> Internet Source	1 %
18	<a href="http://www.frontiersin.org">www.frontiersin.org</a> Internet Source	1 %
19	<a href="http://www.journalcra.com">www.journalcra.com</a> Internet Source	1 %

20

Anuradha Venkatraman, Syed Ali Mohamed Yahoob, Yogananth Nagarajan, Sheeba Harikrishnan et al. "Pharmacological Activity of Biosynthesized Gold Nanoparticles from Brown Algae- Seaweed *Turbinaria conoides*", *NanoWorld Journal*, 2018

Publication

<1 %

21

Pulbutr Pawitra, Jaruchotikamol Achida, Cushnie Benjamart, Rattanakiat Sakulrat, Nualkaew Somsak. "Anti-lipolytic, -amylase inhibitory and antioxidant activities of *Pseuderanthemum palatiferum* (Nees) Radlk. leaf ethanolic extract", *Journal of Medicinal Plants Research*, 2014

Publication

<1 %

22

T. S. Panchabhai. "Validation of therapeutic claims of *Tinospora cordifolia*: a review", *Phytotherapy Research*, 04/2008

Publication

<1 %

Exclude quotes Off

Exclude matches Off

Exclude bibliography On